

**new**  
**termigard**®  
**SYSTEM**  
*Bait System for Termite Control*

Complete and  
effective termite control



# Sistema TERMIGARD®



## COMPLETE & EFFECTIVE TERMITE CONTROL

### Termiticide bait, What is it?

Termiticide baits are highly effective in controlling termites. Unlike the traditional chemical treatment of chemical barriers a baits system requires careful planning and time for the active substance to be distributed throughout all the colony.

During the period of supervision and monitoring, the professional applying the system must follow the process carefully to ensure success. The end result is outstanding, the treatment provides permanent coverage and will totally eliminate colonies of termites in the treatment area.

### TERMIGARD® system- guaranteed results

TERMIGARD® System is a slow acting termiticide system That achieves total control of a colony by the use of a food bait impregnated with the active ingredient diflubenzuron which, when ingested by the termite, and taking advantage of termite biology, transfers its harmful effects to the colony until completely eliminated.

*\* The extraordinary appeal and attraction os the Bait cellulose support to termites has been demonstrated in studies conducted by independent laboratories, approved and specialising wood treatment and protection.*



### TERMIGARD® Benefist System

1

It takes advantage of the special biology and behavior of termites to facilitate the action of the active ingredient within the colony, and reaching all members without causing alarm, which could lead to escape.

2

Unlike chemical based treatments, with their selective effect , TERMIGARD® is environmentally friendly, and is harmless to people and animals. Does not produces odors or contaminateground-water, If used under the TERMIGARD® control protocol.

3

It acts on the entire colony, not only on the insects in contact with the insecticide.

### DIFLUBENZURÓN-how it works

The active substance is an inhibitor DIFLUBENZURON of chitin synthesis (IGR ) actingin the body of the termite, preventing chitin production, the basic molecule for skeletal development of termites, altering and preventing the molting process thus weakening against their natural predators.

The cellulose support is impregnated with this exclusive active ingredient, which achieves the total eradication of the colony. The process is based on the social behavior of termites wich are divided into castes. Workers are responsible for providing food throughout the mound, transporting it from source to growing juveniles and adults.

This behavior allows the bait to be transported and actively distributed among the entire population. The bait is consumed by workers and distributed throughout the whole mound, accumulating in the body of termites. When termites begin their molting cycle that happens several times before reaching adulthood, the DIFLUBENZURON act on the organism preventing proper formation of the exo - chitin backbone, the deformed insect usually dies, or in any case is not be able to continue its vital cycle.

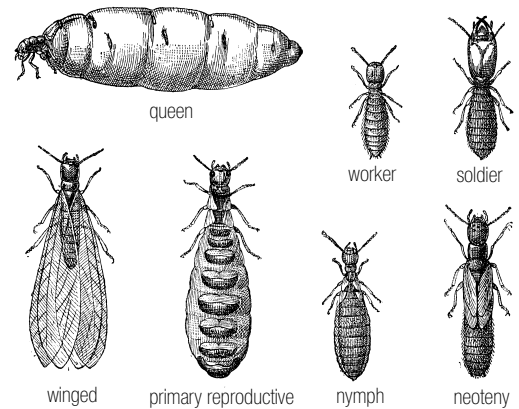
Thus in time total destruction of the termite mound is achieved.



## The TERMIGARD<sup>®</sup> system has successfully proven itself over more than 10 years

TERMIGARD<sup>®</sup> SYSTEM, has been applied in hundreds of treatments nationwide for over a decade with extraordinary results, both in private and public buildings and equity interest. The successful outcome is due to:

- The combination of the high effectiveness of diflubenzuron with the palatability of the cellulose used in the baits..
- Active ingredient ( Diflubenzuron ), recognized internationally, for its their effectiveness in controlling termites
- Is listed in the European Biocidal Products Directive
- System approved and now under evaluation by CTBA + of France
- Excellent palatability alpha-cellulose bait
- Follow a protocol defined by QUIMUNSA
- Technical support and service from QUIMUNSA, leading company leader in timber traetments.

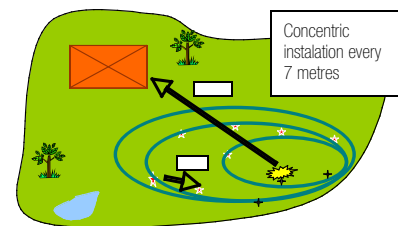


## The methodological process

The system bases its results on the knowledge of the behavior of the termite, the medium in which it operates, the use of a bait of excellent palatability and an effective active ingredient for termite control. The system proposes a process of establishing performance 3 stages are required to successfully install the TERMIGARD<sup>®</sup> system.

1

**THE STUDY**, is essential for success. It is the most important phase to identify damage and analyzes these factors are that have led to termite attack. Once the study is completed we can establish the action parameters for installation of the TERMIGARD<sup>®</sup> system.



2

**INSTALLATION**, can be done any time of year, but for immediate results it is best performed during the Spring period when there is increased termite activity.



3

**THE CONTROL**, once the colony has established contact with the bait station and started feeding the CONTROL phase starts. Stations and critical areas should be reviewed periodically to achieve the final elimination of the colony.





## ACTION PROTOCOL - GROUND STATION



### INSTALLATION - GROUND STATION



■ First, a **study** should be conducted to **identify where in addition to the damaged parts of the affected building, are cellulose based materials present.** Take into account **the environmental characteristics** and urban environment, values such as humidity and temperature to establish criteria for the installation of stations and baits.

■ Once the action plan is complete then proceed to the installation of the bait stations These should be installed outside the perimeter of the building to be protected covering the target area, spaced at a distance greater than 5 m. between each of them.

■ Stations must have a wooden tester to enable **monitoring** and facilitating contact with the termite.

■ Having established contact with the termite, will join the station is the bait and will be filled with the biocide substrate. The Station must be in top condition to avoid excessive moisture, which can cause loss of connection. The moisture in the feedlot must be stable and regular.

■ **The bait replacements should be made with the great care,** to avoid any spare bait disturbance that may alter the feeding behavior of termites.

■ **In urban areas with concrete floors you can replace the flat green plastic lid with an adjustable metal lid** with safety lock. To facilitate the installation, the outer flanges can be removed.

■ **Feedlots should be reviewed periodically,** once a month. It is important to monitor regularly the feedlot to observe the action of the termite. Once the extermination of the colony has been achieves the bait stations may be used as monitoring units in order to watch for any re-colonisation from external sources.





# ACTION PROTOCOL- WALL STATION



■ The Wall Box (wall station) should be installed **to intercept the passage of termites**, adapting to each position either on walls, beams, door and window frames or other areas with damaged woodwork.

■ **The bait should fill the entire interior of the station** and create the best conditions of a microclimate necessary for colonization, take special care to maintain a constant level of humidity.

■ **Punch small holes in the bag** with a sharp object and make a small cut in the inner sheet so as to facilitate direct contact with the bait cord activity.

■ **Wet baits** with the help of a hand sprayer and distilled water, to facilitate connection with the termite feeding area and ensure regular consumption.

■ **Installation of the bait and replacements should be performed** with as much care as possible, facilitating continual feeding on the replacement bait and avoiding any disturbance that might alter the behavior of termites.

■ If there are no signs of damage to woodwork but we are aware of activity.

■ In these cases, you can install display stations by facilitating **use of wicks** connection with termite .



## INSTALLATION - WALL STATION



### Termite behavior

Termites live underground in colonies favouring areas with optimal moisture conditions, where they build large complex structures.

They make erratic progress in urban areas entering buildings, looking for any materials with a cellulosic base, as food. Termites cause major damage to wooden buildings, weakening the load bearing elements of the structure and thus endangering the safety of the building.

They are hard to detect where wooden sections are protected by outer coverings of none cellulosic materials like brick, metal or plastic. Inside such structures termites are protected from predators and light. When their progress is hampered, then they build external channels or strands which are easily detectable.





# ELIMINATION OF THE COLONY

The TERMIGARD® System's excellent results are based on the knowledge of termite behavior and the environment where it operates, besides having excellent bait palatability and the active DIFLUBENZURON. During the treatment process continuous monitoring by the professional applicator is essential.

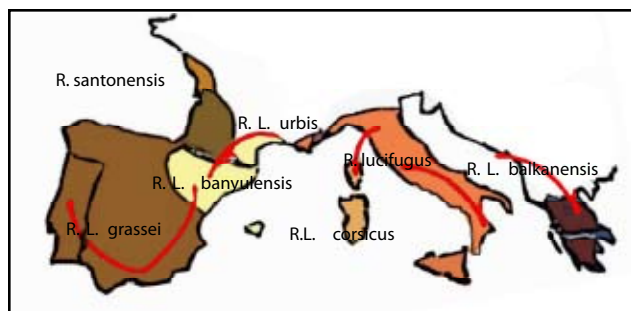
It will be seen that during the first few months the bait and wooden block will be reduced to pulp and consumption will gradually decrease as a result of the weakening of the colony. However there are a number of signals in termite behavior that will indicate complete elimination is near.

- Slowing termite activity
- A bleaching of the termites abdomen. the cuticle of termites is generally transparent and its brownish color is due to food. As the termite consumes the bait you will observe pigmentation changes (more white) in individuals of the colony produced by the bait substrate used.
- Changing of active castes in the colony. As the workers are dying, the Jack of food suply forces the other castes to leave in search of food, thus the presence of soldiers and neotechnic and lower castes, and the percentage increase of soldiers at the stations will be detected.
- Occurrence of mites per termite impairment in workers and soldiers.

Basic documents used bait treatments in

Spreadsheet

Monitoring worksheet



Termites in Europa





# TERMIGARD<sup>®</sup> SYSTEM, PRODUCTS AND ACCESORIES

## Ground station

---



**Ground station 85 mm** Ref. 5000346  
Contents: Station cartridge + piece of poplar wood + key.  
For installation in soil and concrete, innovative design giving excellent control of termites.



**Concrete Cover** Ref. 5000466  
To plug holes in concrete 87 mm, adjustable chromed steel with rubber bezel.



**High security screw and wrench** Ref. 5000348  
Countersunk Torx wrench and cap for concrete.

## Wall station

---



**Wall station** Ref. 5000902  
Unit inside buildings, intercepts and clearly indicates paths of the termites.

## Bait in powder

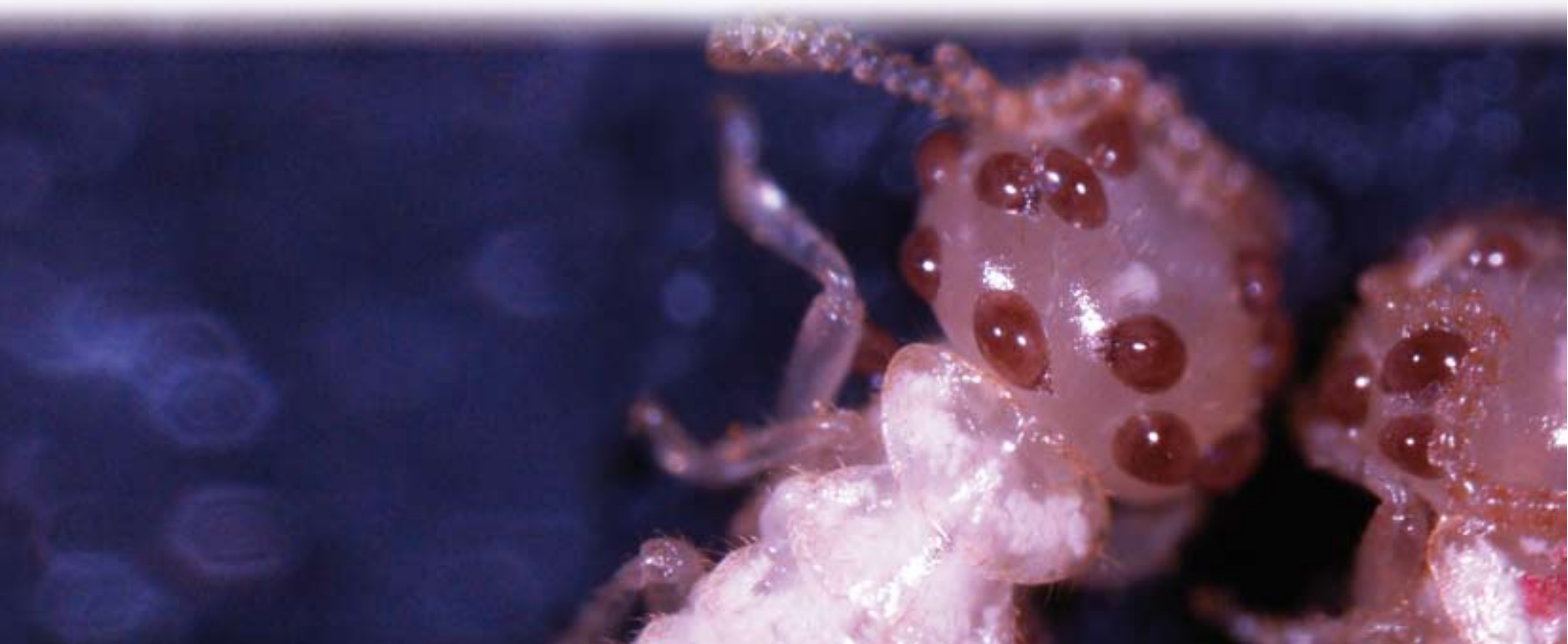
---



**Plus powder bait Termigard<sup>®</sup> Plus**  
Ref. 5000868 (50g)  
Very appetising and attractive for termites. Creates a perfect surface giving uniform contact with termites.



**Dust detector**  
Ref. 5000460 (75g)  
Alpha-cellulose powder without active material great appetite.





Derio Bidea, 51 · 48100 Munguía · Spain  
Tel. (+34) 946 741 085 · Fax (+34) 946 744 829  
info@quimunsa.com · [www.quimunsa.com](http://www.quimunsa.com)

ISO 9001  
BUREAU VERITAS  
Certification



ISO 14001  
BUREAU VERITAS  
Certification



OHSAS 18001  
BUREAU VERITAS  
Certification

